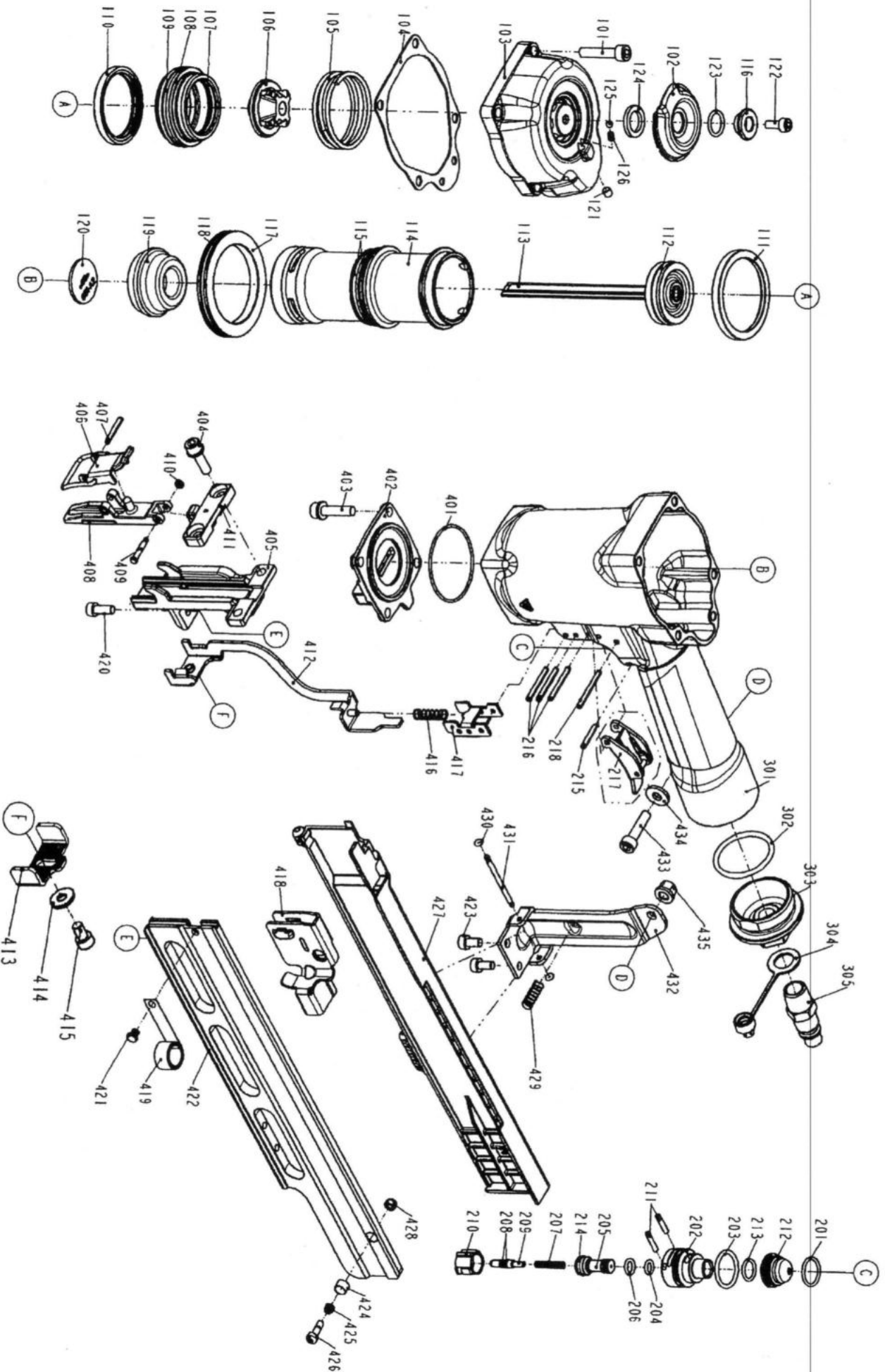


NAGEL - PROFI

Inh. Ingo Filbrandt
Im Winkel 3a · 59174 Kamen
Tel. 0174 4116177 · Fax 03212 1361080

DIAGRAM OF MON/SG51-1/CE



ITEM NO.	PART NO.	DESCRIPTION	ITEM NO.	PART NO.	DESCRIPTION	ITEM NO.	PART NO.	DESCRIPTION
101	2040101-04110-0	HEX.SOC.HD.BOLT	208	2041108-01020-0	O - RING	418	11363-0074702-1	PUSHER
102	11371-0084301-1	DEFLECTOR	209	11375-0860002-1	PLUNGER	419	11372-0460001-1	SPRING
103	11369-0071307-1	CAP	210	11373-0860001-1	TRIGGER VALVE HEAD	420	2040100-03010-2	<i>SQ 65-413</i>
104	11302-0824701-1	CYLINDER CAP SEAL	211	11329-0860001-1	PIN	421	11324-0074702-1	FIXED PIN
105	11360-0460001-3	COMPRESSION SPRING	212	1137A-0860001-1	COVER-PLUNGER	422	11389-0074705-1	MAGAZINE A
106	11370-0820001-1	SEAL	213	2041104-02070-0	O - RING	423	2040101-03040-2	HEX.SOC.HD.BOLT
107	2041104-04070-0	O - RING	214	2041100-01030-0	O - RING	424	1132N-0820001-1	DEEP IMPACT SOCKET 1
108	11368-0820001-2	HD.VALVE PISTON	215	2040401-05100-0	<i>CNW 23-57-215</i>	425	11311-0074701-1	<i>SQ 65-434</i>
109	2041109-05030-0	O - RING	216	2040401-05150-0	<i>CNW 23-57-215</i>	426	11310-0074703-1	DOOR LATCH
110	11399-0460002-1	COLLAR	217	11224-0074701-1	TRIGGER UNIT	427	11348-0070001-3	MOUNTING BRACKET
111	1135J-0070001-1	PRESS RING	218	2040401-05160-0	SPIRAL PINS	428	2040500-02020-0	LOCK NUT
112	2041100-04051-0	O - RING	301	11230-007H801-1	GUN BODY UNIT	429	11337-0074701-1	<i>SQ 65-437</i>
113	11204-0070021-2	DRIVER UNIT ONE PCS	302	2041101-04020-0	<i>CNW 23-57-302</i>	430	2041109-01010-0	<i>SQ 65-438</i>
114	11320-0070005-1	CYLINDER	303	11346-0951301-1	<i>CNW 23-57-303</i>	431	1135N-0074701-1	<i>SQ 65-435</i>
115	2041104-05030-0	O - RING	304	1132L-0074701-1	DUSTY COVER	432	11323-0074707-2	POSITIONING SHEET
116	11381-0464701-1	WASHER	305	1135V-0000021-3	AIR PLUG	433	2040101-04090-0	<i>CNW-23-57-404</i>
117	11321-0820001-1	CYLINDER SPACER	401	2041109-05160-0	O - RING	434	2040202-04010-0	<i>CNW 23-57-440</i>
118	2041104-07020-0	O - RING	402	11326-0824701-1	BASE	435	2040501-04010-0	<i>38-100-440</i>
119	11327-0824701-1	BUMPER	403	2040101-04200-2	HEX.SOC.HD.BOLT			
120	11388-0074703-1	DRIVER GUIDE	404	2040100-04010-2	BOLT ASSY			
121	2040104-03010-0	HEX.SOC.HD.SCREW	405	11303-0074705-2	DRIVER GUIDE			
122	2040101-03050-2	HEX.SOC.HD.BOLT	406	11244-0074702-1	LOCK HANDLE UNIT			
123	2041105-02010-0	O - RING	407	2040402-05110-0	SPIRAL PINS			
124	1135G-0460001-1	RUBBER PAD	408	11352-0074706-1	DRIVER GUIDE COVER A			
125	2040800-02010-0	BALL	409	11324-0074701-1	FIXED PIN			
126	1131L-0464701-1	POSITIONING SPRING	410	1131D-0460001-1	URETHANE RETAINER			
201	2041104-02060-0	O - RING	411	11353-0074703-2	DRIVER GUIDE COVER B			
202	11374-0860001-1	PLUNGER CAP	412	11256-0074702-1	SAFETY B UNIT			
203	2041100-02050-0	O - RING	413	11331-0074707-1	SAFETY A			
204	2041100-01070-0	O - RING	414	2040202-03010-0	<i>SQ 65-435</i>			
205	1133S-0860001-1	VALVE PLUNGER	415	2040101-03030-1	HEX.SOC.HD.BOLT			
206	2041100-01050-0	O - RING	416	11337-0084701-1	<i>SQ 65-415</i>			
207	11376-0860001-1	SPRING	417	11338-0074702-1	SAFETY GUIDE			

2014.06.27

Inh. Ingo Filbrandt
 Im Winkler 3a · 59174 Kamen
 Tel. 0174 4116177 · Fax 03242 1361080

NAGEL-PROFI